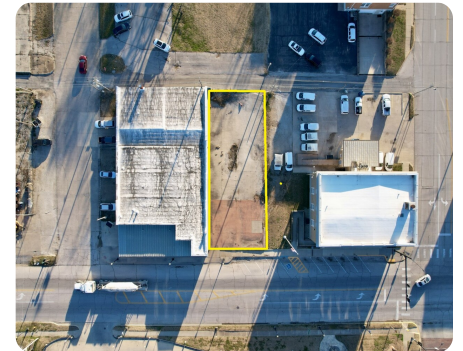


NEW



Commercial Lot

0.16 +/- Acres | Neosho County, KS | \$33,000



ADDRESS

112 N Lincoln
Chanute, KS 66720

LOCATION

Call agent for directions.

PROPERTY SUMMARY

Commercial opportunity in a highly-visible location with all city utilities accessible. This vacant lot measures approximately 50' x 140' (7000 sq ft), with frontage along busy Hwy 39 / N. Lincoln, delivering excellent traffic exposure. Conveniently located next to the Post Office and just one block off of Main Street. Alley access provides added flexibility for parking or deliveries. This lot is set up well for your development needs, or a food truck operation (with city permitting). Give us a call to discuss further details.

nationalland.com/listing/commercial-lot



National Land Realty
222 W. Main
Shop 3
Chanute, KS 66720
NationalLand.com

Valorie Vietti
Office: 620-383-0689
Cell: 620-212-5150
Vvietti@NationalLand.com

Tim Vietti
Office: 620-390-2844
Cell: 620-305-8180
Tvietti@NationalLand.com

The above information is from sources deemed reliable, however the accuracy is not guaranteed. National Land Realty assumes no liability for error, omissions or investment results.