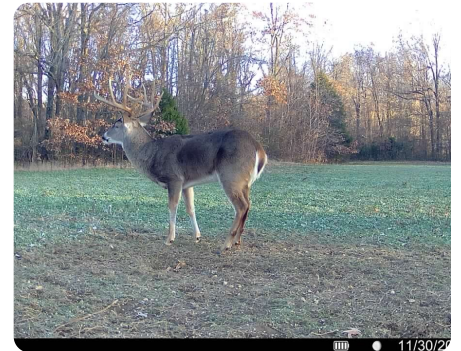
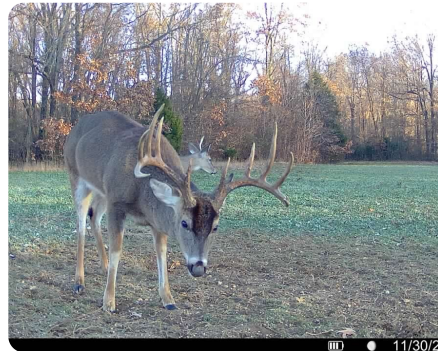
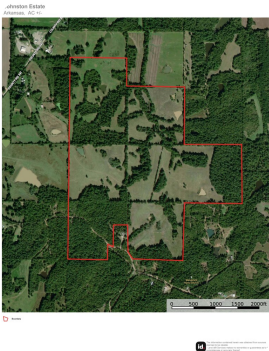


ONLINE AUCTION



291± Acre Arkansas Hill Farm on Crowley's Ridge

291 +/- Acres | Clay County, AR



AUCTION DATE

FROM Apr 16, 2026 10:00 AM CDT
TO Apr 23, 2026 10:00 AM CDT

AUCTION WEBSITE

<http://auctions.nationalland.com>

PROPERTY SUMMARY

Located atop the scenic slopes of Crowley's Ridge, this 291+/- acre Arkansas hill farm offers an exceptional mix of productive pasture and mature timber. With an impressive NCCPI soil rating of 70.4, the property is well-suited for grazing, hay production, or long-term land investment - all in a naturally elevated, well - drained setting. The farm has two direct access points and one deeded easement.

nationalland.com/listing/291-acre-hill-farm-on-crowleys-ridge



National Land Realty
1201 Nettleton Circle
Jonesboro, AR 72401
NationalLand.com



Joel King
Office: 870-532-8441
Cell: 870-847-0945
Fax: 864-331-1610
Jking@nationalland.com

The above information is from sources deemed reliable, however the accuracy is not guaranteed. National Land Realty assumes no liability for error, omissions or investment results.