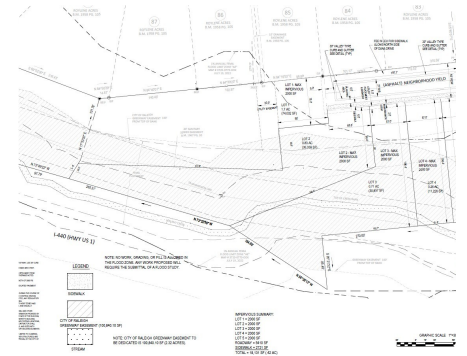
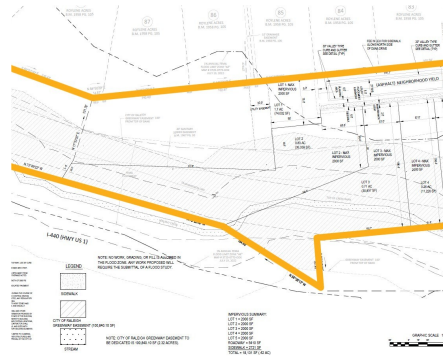


# NATIONAL LAND REALTY®

## 4+ Acres on Buck Jones Road I-440 & I-40 in Raleigh NC!

4.05 +/- Acres | Wake County, NC | \$815,000



### ADDRESS

831 / 835 Buck Jones Road Raleigh  
NC 27606  
Raleigh, NC 27606

### LOCATION

835 Buck Jones Road, Raleigh, NC  
27606

### PROPERTY SUMMARY

**831 & 835 Buck Jones Road, Raleigh, NC!** Featuring  $\pm 4.05$  acres in a highly desirable Raleigh location positioned between Cary and Raleigh, this property offers excellent regional connectivity with quick access to I-40, I-440, Buck Jones Road, and surrounding retail, office, and residential growth corridors. **Wake County PINs:** 0773-94-1953 & 0773-84-7906. This property is **site plan approved for approximately five (5) lots with R-6 zoning**. Lot sizes range from  $\pm 0.26$  acres to  $\pm 1.7$  acres, providing flexibility for residential development. The property features **rear frontage along Walnut Creek**, offering a natural buffer and aesthetic appeal. Utilities, including **water, sewer, gas, and electric, are on-site or immediately adjacent**.

Contact the listing agent for additional details or to schedule a site visit!

[nationalland.com/listing/4-acres-on-buck-jones-road-i440-i40-in-raleigh-nc](https://nationalland.com/listing/4-acres-on-buck-jones-road-i440-i40-in-raleigh-nc)



National Land Realty  
4221 Sentimental Ln  
Apex, NC 27539  
[NationalLand.com](https://NationalLand.com)



**Corbin Beeson**  
Office: 919-372-4656  
Cell: 336-944-7075  
Fax: 864-331-1610  
[CBeeson@nationalland.com](mailto:CBeeson@nationalland.com)

The above information is from sources deemed reliable, however the accuracy is not guaranteed.  
National Land Realty assumes no liability for error, omissions or investment results.