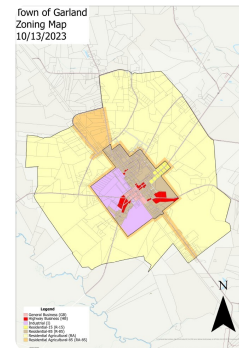
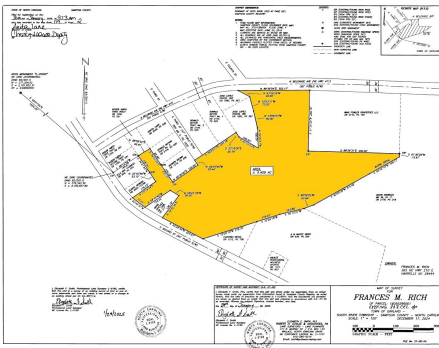


NEW



## 6+ Acres of Highway Business Opportunity in Garland NC

5.8 +/- Acres | Sampson County, NC | \$140,000



### ADDRESS

190 N Belgrade Ave  
Garland, NC 28441

### LOCATION

Road Frontage on N. Belgrade Ave, E  
3rd St, and E 2nd St.

### PROPERTY SUMMARY

Prime acreage in the Town of Garland, currently zoned Highway Business. This property is ideal for a wide range of commercial uses, featuring flat, level topography with both water and sewer available.

Call the listing agent for all inquiries and to schedule a showing!

[nationalland.com/listing/6-acres-of-highway-business-opportunity-in-garland-nc](https://nationalland.com/listing/6-acres-of-highway-business-opportunity-in-garland-nc)



National Land Realty  
4221 Sentimental Ln  
Apex, NC 27539  
[Nationalland.com](https://Nationalland.com)



Corbin Beeson  
Office: 919-372-4656  
Cell: 336-944-7075  
Fax: 864-331-1610  
[CBeeson@nationalland.com](mailto:CBeeson@nationalland.com)

The above information is from sources deemed reliable, however the accuracy is not guaranteed.  
National Land Realty assumes no liability for error, omissions or investment results.