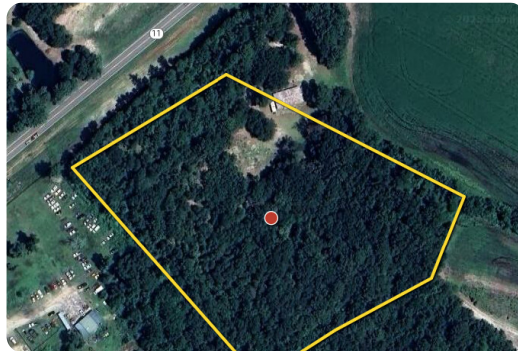




Kelly 7ac.

7.7 +/- Acres | Bladen County, NC | \$7,000



ADDRESS

NC Hwy 11
Kelly, NC 28448

LOCATION

From Kelly take Natmore Rd to NC Hwy 11. Turn right onto Hwy 11 go approximately .2 miles and property on the left.

PROPERTY SUMMARY

Discover 7.7 acres of timberland located just outside Kelly, NC, with convenient access off NC Highway 11. This tract offers a mix of natural woodland, providing privacy and recreational opportunities in a peaceful rural setting. Whether you're seeking a small hunting property, a private retreat, or an investment in timber, this parcel is an excellent fit. Its location combines seclusion with accessibility, just a short drive to surrounding towns and amenities.

nationalland.com/listing/kelly-7ac



National Land Realty
2220 Peanut Plant Road
Elizabethtown, NC 28337
NationalLand.com



Dwayne Branch
Office: 910-569-9316
Cell: 910-374-3932
Fax: 864-331-1610
Dbranch@nationalland.com

The above information is from sources deemed reliable, however the accuracy is not guaranteed.
National Land Realty assumes no liability for error, omissions or investment results.