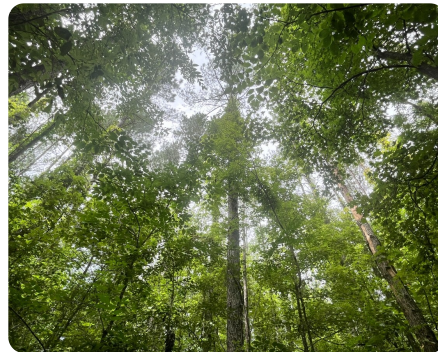




## Deer and Turkey Hunting Property With Cabin or Homesite Near Lawrence

39 +/- Acres | Newton County, MS | \$119,700



### ADDRESS

00 Highway 505  
Lawrence, MS 39336

### LOCATION

From the intersection of US Hwy 80 and MS 505 at Lawrence, follow MS 505 south for 5.5 miles. Property will be on your left

### PROPERTY SUMMARY

This beautiful, secluded hunting and recreational property located along MS Highway 505 offers the perfect blend of natural beauty and outdoor opportunity. Featuring two established food plots with elevated shooting houses and Boss Buck feeders, it's ready for your next hunt. The property features a mix of mature pine plantation and scattered hardwoods, creating excellent habitat for whitetail deer, turkeys, and small game. A meandering tributary of Quarterliah Creek adds scenic beauty and draws wildlife year-round. Whether you're looking for a quiet retreat, a weekend getaway, or a place to build your forever home, cabin or barndo, this property offers multiple options and easy access with great highway frontage. Peaceful, private, and packed with potential — this is a true slice of Mississippi outdoors.

[nationalland.com/listing/deer-and-turkey-hunting-property-with-cabin-or-homesite-near-lawrence](https://nationalland.com/listing/deer-and-turkey-hunting-property-with-cabin-or-homesite-near-lawrence)



National Land Realty  
9 N. Conception St.  
Mobile, AL 36602  
[NationalLand.com](https://NationalLand.com)



Clint Flowers, ALC  
Office: 251-572-7366  
Cell: 251-387-0787  
[cflowers@nationalland.com](mailto:cflowers@nationalland.com)

The above information is from sources deemed reliable, however the accuracy is not guaranteed.  
National Land Realty assumes no liability for error, omissions or investment results.