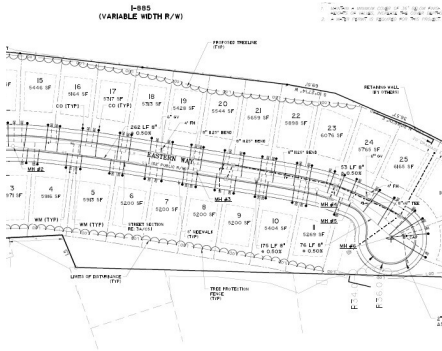


UNDER CONTRACT



## 27 Lot Eastern Durham Infill

5.05 +/- Acres | Durham County, NC | \$1,250,000



### ADDRESS

1 Eastern Way  
Durham, NC 27703

### LOCATION

From I-40 east, take exit 281 (Miami Blvd), right onto S Miami Blvd, left onto Angier Ave, right onto Carter Ave, left onto Rowena Ave, and Right onto East End Ave.

### PROPERTY SUMMARY

National Land Realty is pleased to present this premier infill development opportunity in surging East Durham. A designated redevelopment area just minutes from Downtown, RTP, and Raleigh. Situated in a rapidly transforming corridor, this 5.05± acre project offers 27 recently platted residential lots ranging from 5,000 to 10,000 square feet.

Nearly all due diligence and engineering has been completed by local engineers, making this a plug-and-play opportunity for builders and developers looking for near shovel-ready opportunity in a high-demand market.

With engineering nearly complete, utilities within reach, and substantial nearby development activity, this property represents a **rare, turn-key infill development** opportunity in Durham's urban core. The site offers a clear path to completion with minimal additional investment.

[nationalland.com/listing/27-lot-eastern-durham-infill](https://nationalland.com/listing/27-lot-eastern-durham-infill)



National Land Realty  
4221 Sentimental Ln  
Apex, NC 27539  
[Nationalland.com](https://Nationalland.com)



Cory Bowes  
Office: 919-646-2455  
Cell: 336-583-5370  
Fax: 864-331-1610  
[Cbowes@nationalland.com](mailto:Cbowes@nationalland.com)

The above information is from sources deemed reliable, however the accuracy is not guaranteed.  
National Land Realty assumes no liability for error, omissions or investment results.