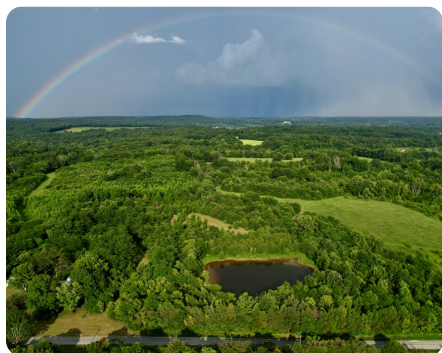


SOLD



Multiple use 10.85 acres

10.85 +/- Acres | Johnson County, IL



ADDRESS

2640 Dutchman Lake Rd
Vienna, IL 62995

LOCATION

Enter the address into GPS it will take you directly to the property, look for sign.

PROPERTY SUMMARY

This **10.85 acre** property in Johnson County lays just north of the town of Vienna and south of Dutchman Lake. The property is approximately 30 mins from Marion, 40 mins from Paducah and within three hours from St Louis, Nashville and Memphis. Located on rural Dutchman Lake Rd, the property offers multiple build sites with **water and electricity** on the property. Or this property could be the gem hidden in a small acreage hunting property being surrounded by perfect wildlife habitat. On the property there is an old homestead with an abandoned house and a couple old barns (this would be the perfect place to build from scratch and still be able to hunt the rest). This property has unlimited potential, build sites, hunting, fishing, and a **camper hookup** set up a variety of multiple use options!

nationalland.com/listing/multiple-use-1085-acres



National Land Realty
216 N Congress St
Suite 3
Rushville, IL 62681
Nationalland.com



Curt Spaulding
Office: 618-961-3487
Cell: 618-697-1987
Fax: 864-331-1610
Cspaulding@nationalland.com

The above information is from sources deemed reliable, however the accuracy is not guaranteed.
National Land Realty assumes no liability for error, omissions or investment results.