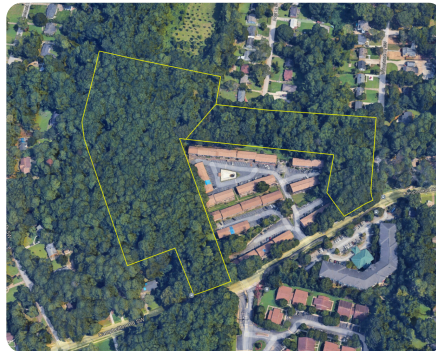
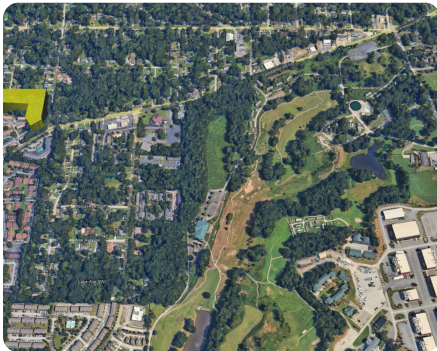




## SW Atlanta Transit-Oriented Infill Land

13.23 +/- Acres | Fulton County, GA | OFFERING MEMORANDUM



### ADDRESS

0 Campbellton Road SW, Tract A/B,  
Atlanta, GA 30311  
Atlanta, GA 30311

### LOCATION

Located at the corner of Campbellton Rd SW & Willowbrook Dr SW, Atlanta, GA 30311. For GPS purposes, property is adjacent to 1829 Campbellton Road SW, Atlanta, GA 30311.

### PROPERTY SUMMARY

±13-acre infill site in Southwest Atlanta's Campbellton Corridor, located in a designated Opportunity Zone. This prime corner parcel wraps the Venetian Hills Apartments and offers access from Campbellton Rd, Willowbrook Dr, and Alder Ln. Being MR-3-C adjacent, it's ideal for rezoning multifamily, mixed-use, or higher-density development. The property sits within the Redevelopment Corridor Character Area, the Campbellton-Cascade Redevelopment Plan, and is eligible for TAD incentives. Served by two MARTA Route 83 bus stops and within the planned BRT corridor, it's minutes from Tyler Perry Studios and Fort McPherson redevelopment. Located in the City's gas station buffer and Small Discount Variety Store overlay, this site aligns with Atlanta's vision for equitable, transit-oriented growth.

[nationalland.com/listing/sw-atlanta-transitoriented-infill-land](https://nationalland.com/listing/sw-atlanta-transitoriented-infill-land)



**National Land Realty**  
2250 North Druid Hills Road  
Ste 234  
Atlanta, GA 30329  
[Nationalland.com](https://Nationalland.com)

**Christopher Bell**  
Office: 470-748-2985  
Cell: 470-740-9886  
Fax: 864-331-1610  
[Cbell@nationalland.com](mailto:Cbell@nationalland.com)

**R.S. Bell**  
Office: 470-735-7126  
Cell: 470-665-3544  
Fax: 864-331-1610  
[Rbell@nationalland.com](mailto:Rbell@nationalland.com)

The above information is from sources deemed reliable, however the accuracy is not guaranteed.  
National Land Realty assumes no liability for error, omissions or investment results.