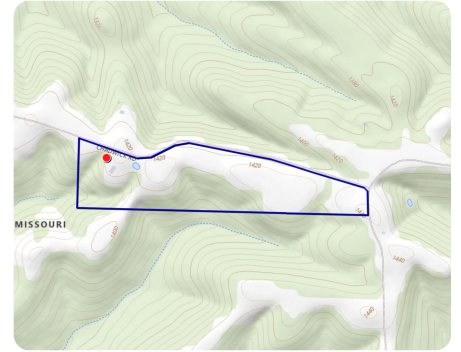




## Multi purpose farm in the heart of the Ozarks

75 +/- Acres | Christian County, MO | \$400,000



### ADDRESS

000 A Chadwick Rd  
Chadwick, MO 65629

### LOCATION

Type coordinates into GPS 36.91724  
N, 92.94081 W

### PROPERTY SUMMARY

Discover 75 +/- acres of opportunity and seclusion in the heart of the Ozarks! Located just outside Chadwick, Missouri, this incredible property is surrounded by the Mark Twain National Forest, offering unmatched privacy, stunning views, and access to thousands of acres of public land. At the center of the farm sits a 50x60 red iron barn. All utilities are already in place, making this a turnkey setup for your dream homestead, hunting retreat, or working farm. The land is a perfect mix of rolling hilltop pasture—ideal for grazing cattle—and wooded draws that provide excellent deer and turkey hunting. Two ponds offer year-round water for livestock and wildlife. Whether you're looking for a multi-use property, private getaway, or a place to build your forever home, this Ozark gem checks every box. Come experience peaceful country living surrounded by nature.

[nationalland.com/listing/multi-purpose-farm-in-the-heart-of-the-ozarks](https://nationalland.com/listing/multi-purpose-farm-in-the-heart-of-the-ozarks)



**National Land Realty**  
303 South Washington Street  
Strafford, MO 65757  
[Nationalland.com](https://Nationalland.com)



**Zach Schermer**  
Office: 417-222-8211  
Cell: 417-839-8134  
Fax: 864-331-1610  
[Zschermer@nationalland.com](mailto:Zschermer@nationalland.com)

The above information is from sources deemed reliable, however the accuracy is not guaranteed.  
National Land Realty assumes no liability for error, omissions or investment results.