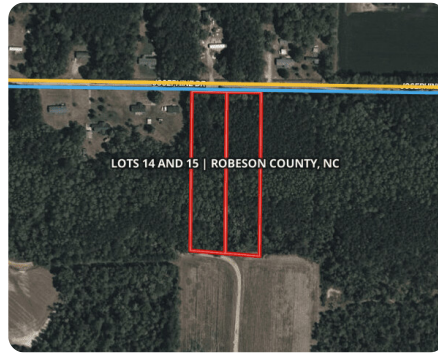


NEW



Josephine Lot 14 & 15

5 +/- Acres | Robeson County, NC | \$60,000



ADDRESS

0 Josephine Drive, Lots 14 & 15
Lumberton, NC 28359

LOCATION

0 Josephine Drive, Lumberton, NC
28359

PROPERTY SUMMARY

Cash Discount: \$60,000, Financing Price: \$70,000, Down Payment \$14,000 (20%), 5 years note @ 14% interest. Settle into the peace and space of rural living with this exceptional opportunity—two adjoining lots offering added flexibility, extra acreage, and room to bring your vision to life. Whether you're dreaming of a private homestead, weekend getaway, or a property with room to expand, these parcels provide the freedom to build, garden, or even raise animals in a relaxed residential agricultural setting. With power and water available at the street and a septic system needed, the essentials are already within reach. The lots sit along a quiet dirt road in fair condition, offering just the right balance of seclusion and accessibility. Looking for larger acreage? We have more lots available on this street, up to 12.5 contiguous acres. Contact us for more information.

nationalland.com/listing/josephine-lot-14-15



National Land Realty
2220 Peanut Plant Road
Elizabethtown, NC 28337
NationalLand.com



Coleman Tatum
Office: 910-460-3178
Cell: 910-991-6517
Fax: 864-331-1610
Ctatum@nationalland.com

The above information is from sources deemed reliable, however the accuracy is not guaranteed.
National Land Realty assumes no liability for error, omissions or investment results.