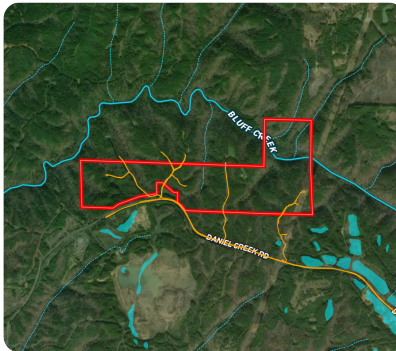




Kellerman Hunting & Recreation Tract

221 +/- Acres | Tuscaloosa County, AL | \$339,000



ADDRESS

0 Daniel Creek Road
Kellerman, AL 35468

LOCATION

Call agent for details.

PROPERTY SUMMARY

221± Acres – Prime Hunting & Timberland on Daniel Creek Road
Bluff Creek • Multiple Access Points • Great Wildlife Habitat

This versatile 221-acre recreational tract offers everything an outdoor enthusiast or investor could want. Located along Daniel Creek Road, the property features four access points and a solid internal road system for easy travel throughout.

Diverse Timber: A mix of mature pine and hardwoods, offering both beauty and long-term timber value. There are numerous crabapple and sawtooth oaks across the property, which are great for wildlife!

Excellent Hunting: Strong populations of deer and turkey, with two green fields and several established mineral licks to support game activity

Water Features: Bluff Creek flows through the property, complemented by a small

nationalland.com/listing/kellerman-hunting-recreation-tract



National Land Realty
2809 8th Street
Tuscaloosa, AL 35401
NationalLand.com

Josh Hixon
Office: 205-557-8272
Cell: 205-361-0946
Fax: 864-331-1610
Jhixon@nationalland.com

Allan Hixon
Office: 205-606-5414
Cell: 205-799-1422
Fax: 205-343-2144
Ahixon@nationalland.com

The above information is from sources deemed reliable, however the accuracy is not guaranteed.
National Land Realty assumes no liability for error, omissions or investment results.