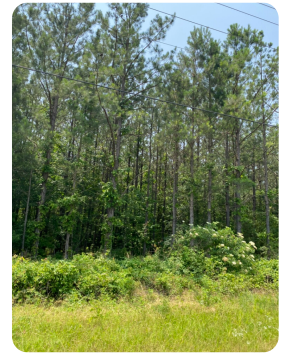
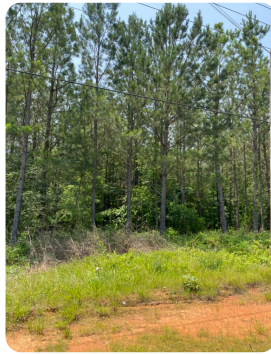




Shelby County Spring Creek Tract

35 +/- Acres | Shelby County, AL | \$348,250



ADDRESS

0 Highway 61
Columbiana, AL 35051

LOCATION

From Columbiana, take Hwy 47
South, left on Hwy 61, and property is
half a mile on the right.

PROPERTY SUMMARY

It is hard to find 35 unrestricted acres in the heart of Shelby County, AL but now you have! Property is located just south of Columbiana on Highway 61. There is power and water available on Highway 61 and there are several beautiful homesites. Spring Creek runs through the property providing water for wildlife. Deer and turkey are seen often and the property is surrounded by well managed farms and timberland. Come build your dream in the country but only 45 minutes from downtown Birmingham.

nationalland.com/listing/shelby-county-spring-creek-tract



National Land Realty
9 N. Conception St.
Mobile, AL 36602
NationalLand.com



Sean Brown
Office: 251-766-0549
Cell: 205-531-9221
Fax: 888-672-1810
Sbrown@nationalland.com

The above information is from sources deemed reliable, however the accuracy is not guaranteed.
National Land Realty assumes no liability for error, omissions or investment results.