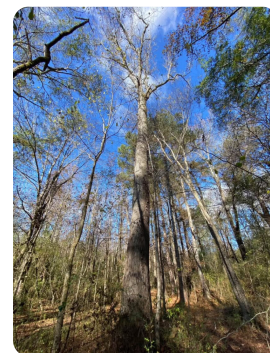


**SOLD**



## Saint Clair County Shoal Creek Homesite

10.3 +/- Acres | Saint Clair County, AL



### ADDRESS

0 Shoal Creek Road  
Ashville, AL 35953

### LOCATION

From Ashville take 231 toward Pell City. Turn left on Shoal Creek Road and property is on the corner on right.

### PROPERTY SUMMARY

Excellent opportunity to own a unique property on beautiful Shoal Creek in Saint Clair County, Alabama. Property has paved road frontage on Shoal Creek Road and Highway 231 with water and power on site. The neighboring property has already perked and there are several excellent homesites. There are abundant wildlife in the area including deer and turkey and Shoal Creek feeds into Neely Henry Lake. Property is conveniently located between Ashville and Pell City and with the frontage on 231, there's an excellent opportunity for commercial development one day. Don't let this deal slip by!

[nationalland.com/listing/saint-clair-county-shoal-creek-homesite](https://nationalland.com/listing/saint-clair-county-shoal-creek-homesite)



National Land Realty  
9 N. Conception St.  
Mobile, AL 36602  
[NationalLand.com](https://NationalLand.com)



**Sean Brown**  
Office: 251-766-0549  
Cell: 205-531-9221  
Fax: 888-672-1810  
[Sbrown@nationalland.com](mailto:Sbrown@nationalland.com)

The above information is from sources deemed reliable, however the accuracy is not guaranteed.  
National Land Realty assumes no liability for error, omissions or investment results.