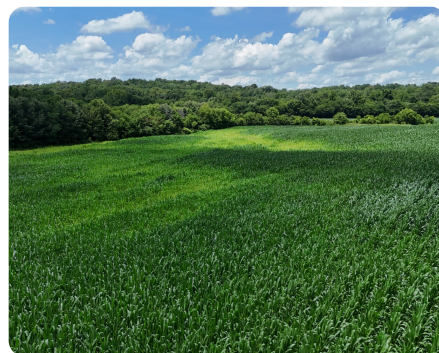


SOLD



Mountain Road Farm and Timber Tract!

50.33 +/- Acres | Rowan County, NC



ADDRESS

0 Mountain Road, Tract A
Cleveland, NC 27013

LOCATION

0 Tract A Mountain Rd. Cleveland NC
27013 please see sign.

PROPERTY SUMMARY

This 50.33 +/- acre tract in Rowan County, just outside Cleveland, NC, offers a rare mix of productivity, privacy, and natural beauty. With 17 +/- acres of tillable land, fertile soil, and a scenic 2.5-acre spring-fed pond, it's ideal for farming, recreation, or a private retreat. Abundant wildlife, including deer and turkey, make it perfect for hunting, and there's potential for a duck impoundment. A blend of open fields and woods allows for versatile use, from homesteading to trails or multiple homesites. Conveniently located near Salisbury, Statesville, and I-85, this peaceful property is ready for your vision.

nationalland.com/listing/mountain-road-farm-and-timber-tract



National Land Realty
3265 S NC 127 Hwy
Hickory, NC 28602
NationalLand.com



Chase Blalock
Office: 980-400-3943
Cell: 919-280-5180
Fax: 864-331-1610
Cblalock@nationalland.com

The above information is from sources deemed reliable, however the accuracy is not guaranteed.
National Land Realty assumes no liability for error, omissions or investment results.