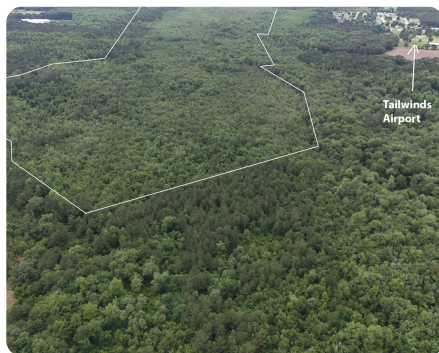


SOLD



## Little Marsh Swamp Wildlife and Duck Haven

494 +/- Acres | Robeson County, NC



### ADDRESS

190 Combined Dr  
Saint Pauls, NC 28384

### LOCATION

190 Combine Dr. St Paul's, NC

### PROPERTY SUMMARY

Wildlife breeding ground. Last time a human was on it was 1985 when it was logged...except for me in 2004. This has incredible "safe" breeding ground for Any upland game and all waterfowl. Incredibly diverse habitat untouched for generations. There are deer, Bear, Bobcat, Raccoon, etc. that surely are state records. A 100' wide gas line easement, an 80' wide utility easement, and an abandoned railroad easement are excluded from the wetlands mitigation restriction. Additionally, the wetland easement specifically allows a 12' wide trail to be installed and maintained for the entire 2.58 mile length of the property.

[nationalland.com/listing/little-marsh-swamp-wildlife-haven](https://nationalland.com/listing/little-marsh-swamp-wildlife-haven)



National Land Realty  
669 Marina Drive  
Ste B-4  
Charleston, SC 29492  
[NationalLand.com](https://NationalLand.com)



William Herron-Marshall  
Office: 855-384-5263  
Cell: 843-245-2639  
Fax: 864-331-1610  
[Cmarshall@nationalland.com](mailto:Cmarshall@nationalland.com)

The above information is from sources deemed reliable, however the accuracy is not guaranteed.  
National Land Realty assumes no liability for error, omissions or investment results.