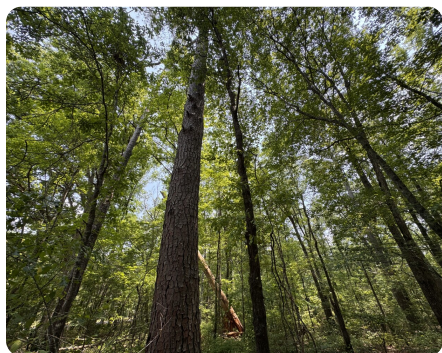


SOLD



Four Mile Rd. Wooded Homesite Tract #1

9.31 +/- Acres | Monroe County, MS



ADDRESS

0 Four Mile Rd Lot #1
Smithville, MS 38870

LOCATION

From Smithville, MS:

Take MS-25 N for approximately 3.2
Miles

Turn left onto 4-Mile Road

The property begins approximately
.34 miles on the right

PROPERTY SUMMARY

Discover the perfect blend of privacy, beauty, and convenience with this stunning 9.31 ± acre wooded lot located on Four-Mile Road in Smithville, Mississippi. Conveniently situated between Smithville and Amory, this property offers easy access to both towns while maintaining a peaceful, rural atmosphere.

Towering mature timber blankets the land, providing a quiet, natural setting and the ideal backdrop for your dream homesite. With paved road frontage and utilities available along the road, this tract is both picturesque and ready for your vision.

Set among an area of well-maintained, custom homes, this property offers a rare opportunity to carve out your own space in a highly desirable location.

Don't miss your chance to own a prime piece of Monroe County. Contact us today to schedule a showing!

nationalland.com/listing/four-mile-rd-wooded-homesite-tract-1



National Land Realty
270 CR 1742
Saltillo, MS 38866
NationalLand.com



Dustin Clardy
Office: 662-493-3194
Cell: 662-322-4861
Fax: 662-796-3618
dclardy@nationalland.com

The above information is from sources deemed reliable, however the accuracy is not guaranteed.
National Land Realty assumes no liability for error, omissions or investment results.