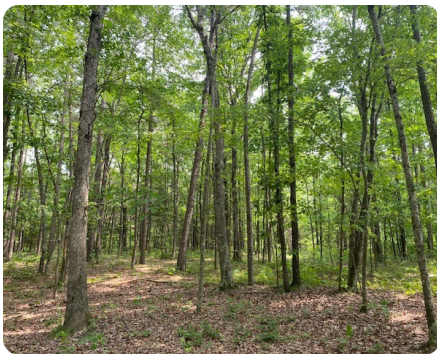




## 27.71 Acres of Undeveloped, Recreational Land with Beautiful Fishing Pond, Tumbling Shoals, Cleburne County, AR

27.71 +/- Acres | Cleburne County, AR | \$249,000



### ADDRESS

505 Yates Lane  
Tumbling Shoals, AR 72546

### LOCATION

Take Hwy 25 N from Heber Springs to Tumbling Shoals, Make a left off of Hwy 25 onto Yates Lane follow down to dead end road, property will be on both sides of road.

### PROPERTY SUMMARY

Discover 27.71 secluded acres in Tumbling Shoals, AR—ideal for recreation, relaxation, or development. This undeveloped property features planted pine, mature hardwoods, and a beautiful one-acre fishing pond. Enjoy excellent deer, turkey, and bear hunting, plus scenic views from its small mountain perch near Greers Ferry Lake. Conveniently located just minutes from Hwy 25's swimming and camping areas, and only 10 minutes from Greers Ferry Dam, JFK Park, shopping, and dining. With multiple potential building sites, it's perfect for a dream home, private retreat, family campsite, or hunting haven. ATV trails included—endless possibilities await!

[nationalland.com/listing/2771-acres-of-undeveloped-recreational-land-with-beautiful-fishing-pond-tumbling-shoals-cleburne-county-ar](https://nationalland.com/listing/2771-acres-of-undeveloped-recreational-land-with-beautiful-fishing-pond-tumbling-shoals-cleburne-county-ar)



**National Land Realty**  
1501 N. Pierce St.  
Suite 104  
Little Rock, AR 72207  
[Nationalland.com](https://Nationalland.com)

**Holly Crosby**  
Office: 870-259-2960  
Cell: 870-659-8582  
Fax: 864-331-1610  
[Hcrosby@nationalland.com](mailto:Hcrosby@nationalland.com)

**Justin Crosby**  
Office: 870-900-2485  
Cell: 870-659-5324  
Fax: 864-331-1610  
[Jcrosby@nationalland.com](mailto:Jcrosby@nationalland.com)

The above information is from sources deemed reliable, however the accuracy is not guaranteed.  
National Land Realty assumes no liability for error, omissions or investment results.