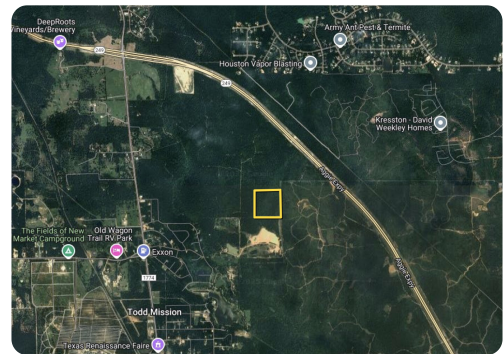


UNDER CONTRACT



## 36+/- ac Isolated Rural Lot – Investment Opportunity!

36 +/- Acres | Grimes County, TX | \$440,520



### ADDRESS

A0096 H M Bullock, Tract 4  
Plantersville, TX 77363

### LOCATION

reference map

### PROPERTY SUMMARY

Discover this private and secluded rural parcel, perfect for off-grid living, recreation, or long-term investment. The property is currently landlocked, with no direct access to a public road. Access will require a negotiated easement or legal right-of-way through neighboring properties. Ideal for buyers looking to capitalize on the area's ongoing expansion. Situated near a large residential development.

This tract offers natural beauty, privacy, and a unique opportunity for those looking to develop or hold rural land at a competitive price. Ideal for buyers familiar with rural development or adjacent landowners seeking to expand their holdings.

[nationalland.com/listing/36-ac-isolated-rural-lot-investment-opportunity](https://nationalland.com/listing/36-ac-isolated-rural-lot-investment-opportunity)



National Land Realty  
Regus (APEX) Executive Suites  
1135 Grand Central Parkway - Ste 302  
Conroe, TX 77304  
[Nationalland.com](https://Nationalland.com)



Cynthia Widiker  
Office: 281-317-0220  
Cell: 281-948-1969  
[Cwidiker@nationalland.com](mailto:Cwidiker@nationalland.com)

The above information is from sources deemed reliable, however the accuracy is not guaranteed.  
National Land Realty assumes no liability for error, omissions or investment results.