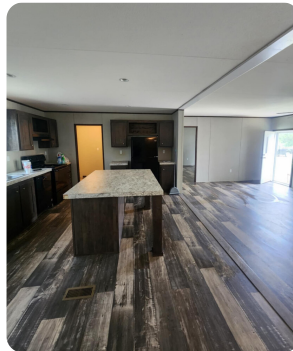




## 2024 Mobile Home on over half an acre

0.6 +/- Acres | Livingston Parish, LA | \$149,000



### ADDRESS

25478 O Nellion Rd.  
Lot D  
Holden, LA 70744

### PROPERTY SUMMARY

MOVE-IN READY! 2024 4/2 Mobile Home on .6 Acre Lot on dead-end road in Holden, LA. Easy access from LA 441 to I-12 and Hwy 190.

### LOCATION

From Livingston, take I-12 to Exit at Holden, go left on LA-441. Turn right on O Nellion Rd. Property is towards the end of the road on the right.

[nationalland.com/listing/2024-mobile-home-on-over-half-an-acre](https://nationalland.com/listing/2024-mobile-home-on-over-half-an-acre)



National Land Realty  
37283 Swamp Road  
Unit 702  
Prairieville, LA 70769  
[NationalLand.com](https://NationalLand.com)



Allison Liuzzo  
Office: 225-831-8677  
Cell: 225-773-6525  
Fax: 864-331-1610  
[Aliuzzo@nationalland.com](mailto:Aliuzzo@nationalland.com)

The above information is from sources deemed reliable, however the accuracy is not guaranteed.  
National Land Realty assumes no liability for error, omissions or investment results.