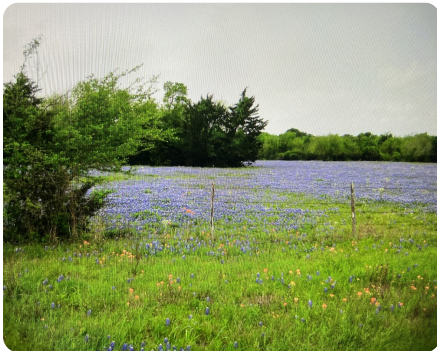




## Prime Undeveloped Land in Navasota

82.56 +/- Acres | Grimes County, TX | \$2,456,000



### ADDRESS

TBD A0019 FJ Greenwood, Track 3,  
ACRES 82.56 Fronting FM 2445  
Navasota, TX 77868

### LOCATION

Aggie Expressway 249 North, Exit FM  
1774, turn left (West) on Texas 105,  
turn right FM 2445 the gate entry will  
be on the left before CR 342

### PROPERTY SUMMARY

Discover a rare opportunity to own unspoiled acreage in Navasota, Texas, offering exceptional potential for a working ranch, hobby operation, or future division into rural residential tracts. This scenic tract features a spring-fed pond, a seasonal creek, and gently rolling terrain adorned with native grasses, mature pecan and hackberry trees, and a diverse mix of fertile soils. Currently operated as a cow-calf grazing property, it is fully fenced for security and livestock management. Essential utilities are in place, with electricity on-site, and public water and fiber-optic internet available offering modern convenience in a peaceful country setting. Located just minutes from access to Highway 105, Aggie Expressway 249, and FM 1774, this property provides quick routes to nearby towns and major cities. With its natural water features, mature shade trees, productive soils, and excellent accessibility, this land presents a unique investment opportunity.

[nationalland.com/listing/prime-undeveloped-land-in-navasota](https://nationalland.com/listing/prime-undeveloped-land-in-navasota)



**National Land Realty**  
Regus (APEX) Executive Suites  
1135 Grand Central Parkway - Ste 302  
Conroe, TX 77304  
[Nationalland.com](https://Nationalland.com)



**Cynthia Widiker**  
Office: 281-317-0220  
Cell: 281-948-1969  
[Cwidiker@nationalland.com](mailto:Cwidiker@nationalland.com)

The above information is from sources deemed reliable, however the accuracy is not guaranteed.  
National Land Realty assumes no liability for error, omissions or investment results.