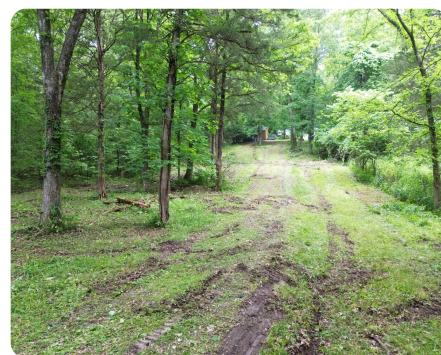


**SOLD**



## Robertsville Retreat

28.1 +/- Acres | Franklin County, MO



### ADDRESS

149 FLASH CREEK RD  
Robertsville, MO 63072

### LOCATION

\*GPS is accurate. Marked with "For Sale" signs on west side of road.

### PROPERTY SUMMARY

Discover the perfect blend of open space and wooded privacy on this stunning 28.1 +/- acre property in Robertsville. Featuring approximately 10 acres of beautiful open pasture and 13 acres of scattered timber, this land offers an ideal setting for a country homesite, recreational retreat, or small farm.

A 5-acre homesite provides a great spot with minimal work needed to make it build ready, while the property's natural features—rolling pasture, mature trees, and peaceful creek frontage—offer both aesthetic beauty and practical use. Whether you're looking to build your dream home, create a small farm, or simply enjoy a private escape, this versatile parcel delivers. This is a great opportunity to own a well-balanced piece of land in a quiet, rural setting—just the right mix of open and wooded ground. Don't miss your chance to make it yours

[nationalland.com/listing/robertsville-retreat](https://nationalland.com/listing/robertsville-retreat)



**National Land Realty**  
2158 Hwy Z  
Wentzville, MO 63385  
[Nationalland.com](https://Nationalland.com)

**Alec Wardenburg**  
Office: 636-429-4711  
Cell: 636-577-5288  
Fax: 864-331-1610  
[awardenburg@nationalland.com](mailto:awardenburg@nationalland.com)

**Caleb Morris**  
Office: 314-912-2827  
Cell: 314-604-2269  
Fax: 864-331-1610  
[Cmorris@nationalland.com](mailto:Cmorris@nationalland.com)

The above information is from sources deemed reliable, however the accuracy is not guaranteed.  
National Land Realty assumes no liability for error, omissions or investment results.