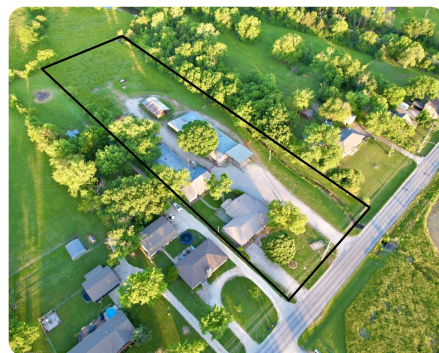


SOLD



Outskirts 3+/- acres, 4 bed - 3 bath

2.7 +/- Acres | Neosho County, KS



ADDRESS

1604 S Plummer
Chanute, KS 66720

LOCATION

Call agent for directions.

PROPERTY SUMMARY

Situated on a 2.75 acre lot, this 4 bedroom, 3 bath home offers room to live, work, and grow. Step inside to find generously sized living areas; 2 family rooms, formal dining, and a master suite with bath. The original two bedrooms are just down the hall from the dining room with a full bathroom next door. The 4th bedroom/office borders the kitchen and is connected to the 3/4 bath with access to the mudroom. The large eat-in kitchen features ample cabinets and plenty of space for the family. This property also includes a variety of outbuildings that open up endless possibilities. The front shop includes an office and could operate as a mechanic shop or custom business. A paint booth in the north shop adds a unique utility, while the rest of the outbuildings are open to your imagination. The back of the property has an uninterrupted 1 acre of grass that creates a great spot for a small hobby farm or large garden. Enjoy country vibes and city amenities, without city restrictions.

nationalland.com/listing/outskirts-3-acres-4-bed-3-bath



National Land Realty
222 W. Main
Shop 3
Chanute, KS 66720
Nationalland.com

Valorie Vietti
Office: 620-383-0689
Cell: 620-212-5150
Vvietti@NationalLand.com

Tim Vietti
Office: 620-390-2844
Cell: 620-305-8180
Tvietti@NationalLand.com

The above information is from sources deemed reliable, however the accuracy is not guaranteed.
National Land Realty assumes no liability for error, omissions or investment results.