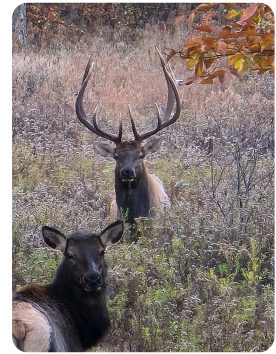




## Morris Hunting Retreat and Cabin

584.2 +/- Acres | Lycoming County, PA | \$3,199,900



### ADDRESS

0 Linck Hill Rd  
Morris, PA 16938

### LOCATION

Located in Lycoming County with access from Linck Hill Road in Tioga County.

### PROPERTY SUMMARY

Tucked deep in the remote ridgelines of Northcentral Pennsylvania, this extraordinary property spans nearly 600 acres of highly usable ground—this landscape offers a rare combination of flat to gently rolling topography.

The entire estate is encircled by a 10-foot high-tensile game fence, creating a private domain that is as secure as it is secluded. The wildlife here includes a long-established herd of elk, including several extremely rare white elk. The Whitetail include bucks with potential of 200+ inches.

The property includes a vast, interwoven trail system. Two spring-fed ponds contain largemouth bass. A 1,000-yard steel target range is on site. A run-in shed awaits those bringing horses.

At the heart of the property sits a warm, rustic lodge, paneled in knotty pine and built for comfort. It sleeps 17 across seven cozy bedrooms and includes a full kitchen, a large covered deck, a fireplace, pool table, and high speed internet for

[nationalland.com/listing/lycoming-county-recreational-600-ac](https://nationalland.com/listing/lycoming-county-recreational-600-ac)



National Land Realty  
9072 Canter Lane  
Hebron, MD 21830  
[Nationalland.com](https://Nationalland.com)



**Doug Williams**  
Office: 443-412-8971  
Cell: 410-726-1831  
Fax: 864-331-1610  
[Dwilliams@nationalland.com](mailto:Dwilliams@nationalland.com)

The above information is from sources deemed reliable, however the accuracy is not guaranteed.  
National Land Realty assumes no liability for error, omissions or investment results.