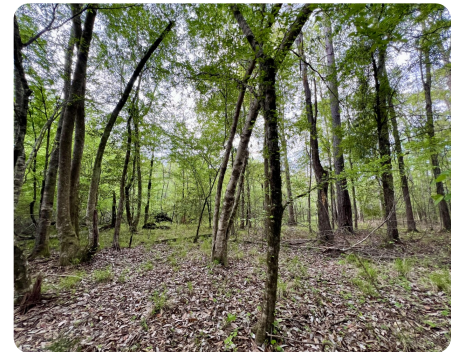


NEW



Sweet Water Mill Creek Homesite, Hunting & Timber Investment Tract

54 +/- Acres | Marengo County, AL | \$205,200



ADDRESS

0 County Road 6
Sweet Water, AL 36782

LOCATION

Call agent for directions

PROPERTY SUMMARY

This homesite or hunting campground is located just south of SR-10 in the Sweet Water community of Marengo County, minutes from both Butler & Thomasville, Alabama. Paved road frontage on Coxheath Road (CR-6) divides the property and gives direct access. Power is located onsite. Mill Creek & Lewis Branch both flow through the tract, providing year-round water sources for wildlife, as well as a potential lake site. Deer, turkey, and small game are abundant & provide great hunting opportunities.

nationalland.com/listing/sweet-water-mill-creek-homesite-hunting-timber-investment-tract



National Land Realty
9 N. Conception St.
Mobile, AL 36602
Nationalland.com

Tom Leatherbury, Jr.
Office: 251-732-6159
Cell: 251-422-5643
Fax: 888-672-1810
Tleatherbury@nationallandrealty.com

Clint Flowers
Office: 251-572-7366
Cell: 251-387-0787
cflowers@nationalland.com

The above information is from sources deemed reliable, however the accuracy is not guaranteed.
National Land Realty assumes no liability for error, omissions or investment results.