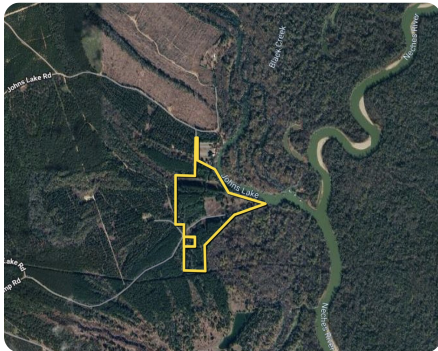




Texas 45 +/- Acres Private Retreat Opportunity

45 +/- Acres | Hardin County, TX | \$995,000



ADDRESS

0 Cravens Camp Rd
Silsbee, TX 77656

LOCATION

SH-105 towards Silsbee, Tx 28 miles left onto FM-770, 15 miles left onto SH-326, left S Pine St, right onto FM-418, left onto FM-1122, left onto FM-92 100ft right onto Old Spurger Hwy, to Cravens Camp Rd. and right which will lead you into the property at the gated entrance.

PROPERTY SUMMARY

Tucked away in East Texas, this secluded 45-acre property presents a rare opportunity to create a premier hunting and fishing retreat or outdoor recreation venture. Situated along Johns Lake and the Neches River, the property features approximately 1,300 feet of river frontage and is bordered by 400 acres of National Park Service. The land benefits from seasonal water flow that enhances wildlife habitat and recreational appeal. Two 2.5-acre bait ponds provide outstanding fishing and waterfowl habitat.

This is a rare chance to own and develop a true Texas sportsman's paradise—where nature, recreation, and long-term investment potential converge along the Neches River.

nationalland.com/listing/45-neches-river-frontage



National Land Realty
137 Rustic Hills Road
Hunt, TX 78024
NationalLand.com



Cynthia Widiker
Office: 281-317-0220
Cell: 281-948-1969
Cwidiker@nationalland.com

The above information is from sources deemed reliable, however the accuracy is not guaranteed. National Land Realty assumes no liability for error, omissions or investment results.