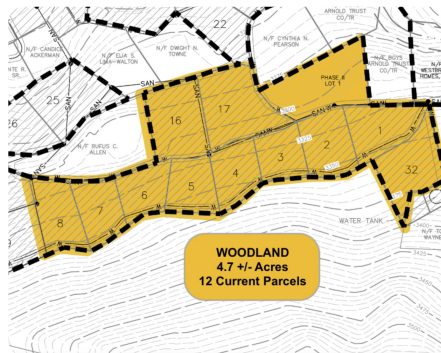


SOLD



Twelve parcel woodland package

4.5 +/- Acres | Haywood County, NC



ADDRESS

TBD (C) Chestnut Walk Dr
Waynesville, NC 28786

LOCATION

Take Allens Creed Rd South from
Waynesville to left on Lickstone Rd.
In .7 miles, take a L on Chestnut Walk
Dr. Keep left at the next intersection
to stay on Chestnut Walk Dr. Turn
right after the old garage and then the
property will be on your right at sign.

PROPERTY SUMMARY

For investors, developers, or visionaries, this 12-lot package in Chestnut Walk (Waynesville, NC) offers a **below-tax-value opportunity** in WNC's desirable market. Acquire an entire section of this established community—ideal for building homes, rental properties, or combining into larger estates. The package includes 11 Phase 1 lots with city water/sewer access (per prior county discussions) and 1 unrestricted Phase 2 lot (likely no HOA, utilities unconfirmed). Together, they form a contiguous parcel with diverse terrain, from gentle slopes to wooded hills, all accessible via paved roads.

Located minutes from downtown Waynesville, the Blue Ridge Parkway, and Asheville, this property meets rising demand for quality homesites in a prime mountain setting. Buyer to verify all utilities, zoning, and development requirements.

nationalland.com/listing/twelve-parcel-woodland-package



National Land Realty
13 Lynnette Dr
Fairview, NC 28730
NationalLand.com



Pat Snyder
Office: 828-618-4448
Cell: 828-761-0841
Fax: 864-331-1610
Psnyder@nationalland.com

The above information is from sources deemed reliable, however the accuracy is not guaranteed.
National Land Realty assumes no liability for error, omissions or investment results.