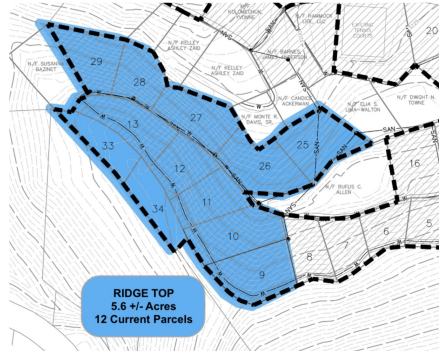


NEW



Twelve parcel ridge top lot package

5.61 +/- Acres | Haywood County, NC | \$174,000



ADDRESS

TBD (D) Chestnut Walk Dr
Waynesville, NC 28786

LOCATION

Take Allens Creed Rd South from Waynesville to left on Lickstone Rd. In .7 miles, take a L on Chestnut Walk Dr. Keep left at the next intersection to stay on Chestnut Walk Dr. Turn right after old garage and take next right to stay on Chestnut Walk Dr to the top.

PROPERTY SUMMARY

Ideal for investors, developers, or buyers seeking an estate tract with long-range views, this 12-lot package with city water/sewer access (per prior county discussions) in Waynesville's Chestnut Walk offers two premium ridge-top parcels (near-flat, panoramic potential), two gentle valley lots (usable terrain below road), and eight wooded slopes (privacy or woodland appreciation). Minutes from downtown Waynesville with paved access, these lots provide immediate build opportunities for spec homes, rentals, or a custom estate—combine parcels for a main residence and guest house. With the Blue Ridge Parkway, Great Smoky Mountains, and Asheville nearby, demand grows for well-located mountain properties. Flexible exit strategies include development, land banking, or creating a private estate with a main house on the ridge and guest house in the valley. *Buyer to verify utilities, zoning, HOA, and requirements.*

nationalland.com/listing/twelve-parcel-ridge-top-lot-package



National Land Realty
13 Lynnette Dr
Fairview, NC 28730
NationalLand.com



Pat Snyder
Office: 828-618-4448
Cell: 828-761-0841
Fax: 864-331-1610
Psnyder@nationalland.com

The above information is from sources deemed reliable, however the accuracy is not guaranteed.
National Land Realty assumes no liability for error, omissions or investment results.