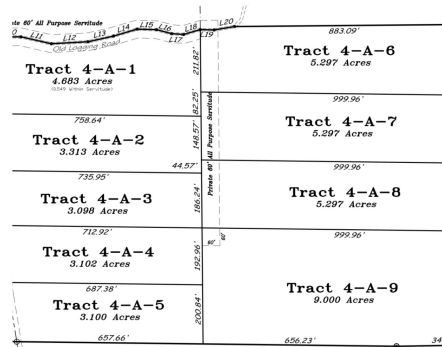


NEW



## Acreage for a beautiful home 4-A-9

9 +/- Acres | Livingston Parish, LA | \$225,000



### ADDRESS

Lot 4-A-9 Oliver Wheat Rd  
Livingston, LA 70754

### LOCATION

Exit I-12 at S Frost. Continue down Hwy 63, turn left onto Oliver Wheat Rd. and property is on the left approx. 4 miles down Oliver Wheat Rd. Signs are displayed.

### PROPERTY SUMMARY

Expansive estate lots tailored for individuals who appreciate seclusion and a serene environment to call home. There's ample space to craft your own personal oasis! Build your dream home, immerse yourself in nature, all while being conveniently close to town amenities. Property is located in the highly regarded Doyle school district. Plenty of space for a workshop, pool, outdoor toys, and equipment. This area is perfect for those that are eager to embrace a lifestyle that values peace and privacy, without sacrificing convenience. Flood X.

[nationalland.com/listing/acreage-for-a-beautiful-home-4a9](https://nationalland.com/listing/acreage-for-a-beautiful-home-4a9)



National Land Realty  
37283 Swamp Road  
Unit 702  
Prairieville, LA 70769  
[NationalLand.com](https://NationalLand.com)



Allison Liuzzo  
Office: 225-831-8677  
Cell: 225-773-6525  
Fax: 864-331-1610  
[Aliuzzo@nationalland.com](mailto:Aliuzzo@nationalland.com)

The above information is from sources deemed reliable, however the accuracy is not guaranteed.  
National Land Realty assumes no liability for error, omissions or investment results.