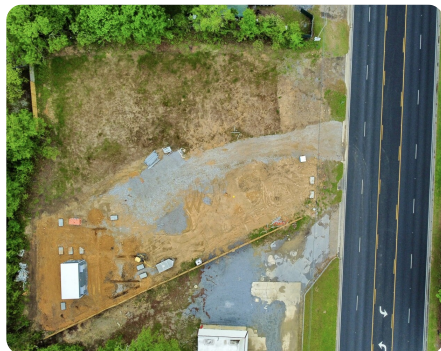


SOLD



280 Commercial Tract

0.65 +/- Acres | Shelby County, AL



ADDRESS

4810 US-280
Harpersville, AL 35078

LOCATION

Call listing agent

PROPERTY SUMMARY

With over 120' of frontage on US Highway 280, this location is hard to miss. Boasting .8 acres, this property has a great footprint and is a blank slate for its new owner. Build now or hold onto it for an investment. Owner Finance is available on this property. Call today to learn more!

nationalland.com/listing/280-commercial-tract



National Land Realty
2633 Valleydale Rd.
Suite 150
Birmingham, AL 35244
Nationalland.com



Gabe Goodson
Office: 205-548-1202
Cell: 205-365-8388
Fax: 864-331-1610
Ggoodson@NationalLand.com

The above information is from sources deemed reliable, however the accuracy is not guaranteed.
National Land Realty assumes no liability for error, omissions or investment results.