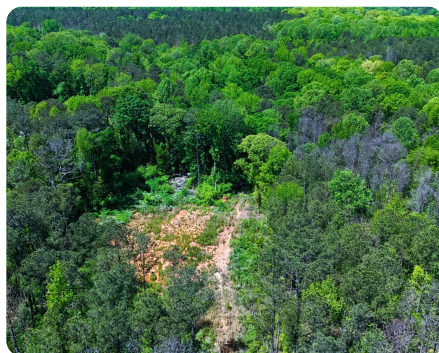
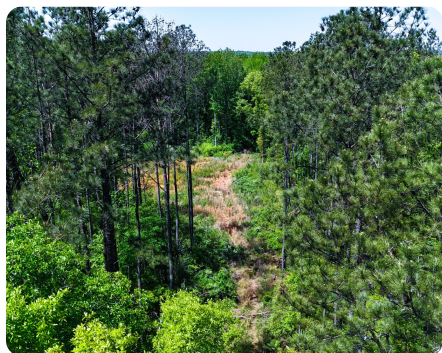


SOLD



East Griffin Residential Buildable Acreage

10 +/- Acres | Spalding County, GA



ADDRESS

603 Musgrove Road
Griffin, GA 30223

LOCATION

From Atlanta, take I-75 S to exit 216 for GA-155 toward McDonough. Merge onto GA-155 S S/N McDonough Rd, then turn right onto GA-155 S. Turn left onto Musgrove Road.

PROPERTY SUMMARY

This exceptional 6.93-acre residential lot offers the perfect blend of peaceful country living and easy city access. Enjoy the tranquility of a close-knit community while being just a short drive from Griffin's amenities and Atlanta's vibrant offerings via convenient I-75 access. Imagine building your dream estate on this spacious, partially cleared property with approximately 250 feet of road frontage. Mature trees and surrounding woods provide a picturesque and private backdrop in a desirable neighborhood. Unlock endless possibilities for outdoor enjoyment! Create your own oasis with a pool, barn, workshop, ATV trails – whatever your heart desires. With ample space and electricity available, this R4-zoned lot is ready for your vision. Experience the best of both worlds: the small-town charm of Griffin with its local shops, restaurants, and community events, plus the easy reach of Atlanta's world-class dining, shopping, and entertainment.

Don't miss this incredible opportunity!

nationalland.com/listing/east-griffin-residential-buildable-acreage



National Land Realty
2250 North Druid Hills Road
Ste 234
Atlanta, GA 30329
Nationalland.com



Matthew Behr
Office: 470-594-5427
Cell: 303-358-4204
Fax: 864-331-1610
Mbehr@nationalland.com

The above information is from sources deemed reliable, however the accuracy is not guaranteed.
National Land Realty assumes no liability for error, omissions or investment results.