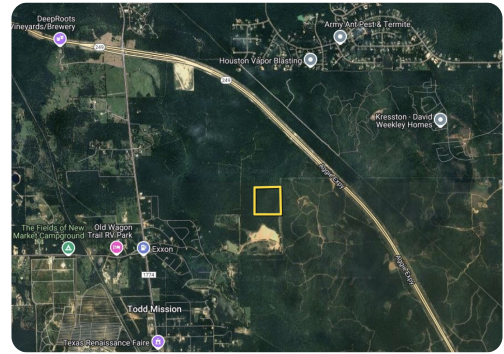


UNDER CONTRACT



36ac +/- Undeveloped Rural Land

36 +/- Acres | Grimes County, TX | \$440,520



ADDRESS

A0096 H M Bullock, Tract 4
Plantersville, TX 77363

LOCATION

reference map

PROPERTY SUMMARY

Seize the opportunity to acquire this expansive 36.71 +/- acre property, ideally located in the rapidly growing Grimes County. This wooded tract features a mix of pine, hardwoods, and yaupon brush, providing excellent wildlife habitat. This is a rare chance to invest in a highly sought-after area of Grimes County, ideal for buyers looking to capitalize on the area's ongoing expansion. Situated near a large residential development, this property is positioned in a high-growth area, making it a prime investment opportunity.

The property was affected by a wildfire in 2005, which may have altered some of the vegetation and terrain. Additionally, the tract may be landlocked with no confirmed legal access—buyers should perform due diligence to verify ingress and egress options.

nationalland.com/listing/36ac-undeveloped-rural-land



National Land Realty
Regus (APEX) Executive Suites
1135 Grand Central Parkway - Ste 302
Conroe, TX 77304
Nationalland.com



Cynthia Widiker
Office: 281-317-0220
Cell: 281-948-1969
Cwidiker@nationalland.com

The above information is from sources deemed reliable, however the accuracy is not guaranteed.
National Land Realty assumes no liability for error, omissions or investment results.