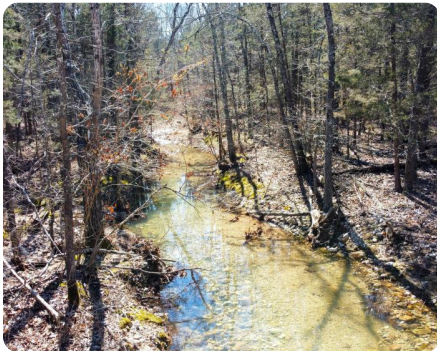




Lesterville Land Minutes From Black River

32 +/- Acres | Reynolds County, MO | \$135,000



ADDRESS

0 County Road 342
Lesterville, MO 63654

LOCATION

From Lesterville:
Take HWY 21 east for 1.1 miles
Turn right onto Annapolis Dr.
Turn right onto county road 342 and
continue for 3.3 miles

PROPERTY SUMMARY

Build, hunt, camp, or just relax in rural southern Missouri! This tract presents a multitude of options at an excellent value. Located just south of Lesterville and the Black River, this property is within minutes of campgrounds, public water access, and more! The property has tremendous access along county road frontage. The property is currently gated across the entrance which leads to a beautiful creek crossing. The topography allows the entirety of the property to be used and enjoyed. There is currently a mix of hardwoods, pines, and cedars throughout. The property has been selectively cut with conservation in mind. A well-kept trail system allows easy navigation throughout the 30 acres with access to multiple locations for a potential build site!

nationalland.com/listing/lesterville-land-minutes-from-black-river



National Land Realty
2158 Hwy Z
Wentzville, MO 63385
Nationalland.com



Alec Wardenburg
Office: 636-429-4711
Cell: 636-577-5288
Fax: 864-331-1610
awardenburg@nationalland.com

The above information is from sources deemed reliable, however the accuracy is not guaranteed.
National Land Realty assumes no liability for error, omissions or investment results.