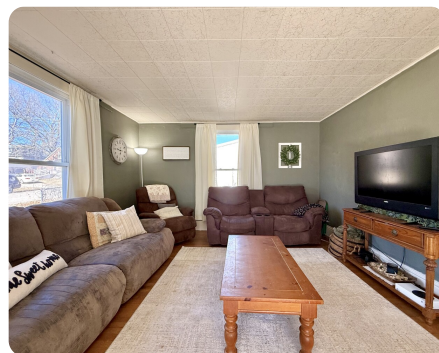


SOLD



Generous 4 Bed, 2 Bath

0.15 +/- Acres | Neosho County, KS



ADDRESS

718 S Garfield Ave
Chanute, KS 66720

LOCATION

City of Chanute

PROPERTY SUMMARY

Welcome to this spacious 4-bedroom, 2-bathroom home offering over 2,000 square feet of living space. The master bedroom is located on the main floor, complete with an attached 3/4 bath for added privacy and convenience. The large, eat-in kitchen is perfect for family gatherings, featuring ample cabinet space. Upstairs, you'll find three traditional bedrooms, and an additional bedroom which was converted from a generously sized closet. Extra storage can be found in the attic, offering plenty of room to keep your home organized. The property also includes a storage shed in the backyard, perfect for tools and outdoor equipment. Plus, with alley access for parking, you'll enjoy easy and convenient off-street parking. Call today to schedule your showing.

nationalland.com/listing/generous-4-bed-2-bath



National Land Realty
222 W. Main
Shop 3
Chanute, KS 66720
NationalLand.com

Valorie Vietti
Office: 620-383-0689
Cell: 620-212-5150
Vvietti@NationalLand.com

Tim Vietti
Office: 620-390-2844
Cell: 620-305-8180
Tvietti@NationalLand.com

The above information is from sources deemed reliable, however the accuracy is not guaranteed.
National Land Realty assumes no liability for error, omissions or investment results.