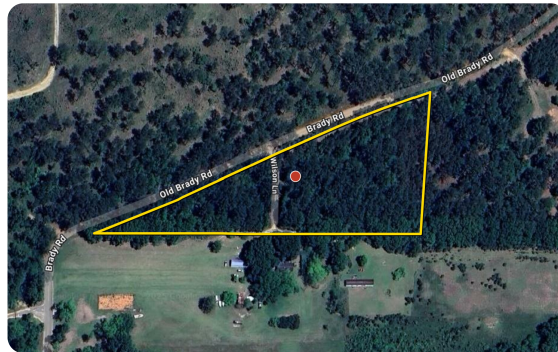


UNDER CONTRACT



## Old Brady Road Steele Bridge Acreage Lot 8 - Photos coming soon!!!

3.98 +/- Acres | Baldwin County, AL | \$59,700



### ADDRESS

0 Old Brady Road  
Robertsdale, AL 36567

### LOCATION

Call Agent for Directions

### PROPERTY SUMMARY

Located just off CR-68, a few minutes drive from both Styx River and the Baldwin Beach Express exit on I-10 (exit 48) at the renowned Buc-ee's, this is the last remaining lot of the Steele Bridge Subdivision. Access is easy with 1,070+ feet of frontage on Old Brady Road, and the scenic timber, flat topography, and convenient utilities make this an easy homesite, mini-farm, or equestrian estate. Horses and other animals are allowed, the property has been surveyed, and the reasonable covenants of the Steele Bridge subdivision protect your property value while still allowing you the freedom to enjoy this acreage as your own. Inquire for more details or to schedule your showing. Photos coming soon!!!

[nationalland.com/listing/old-brady-road-steele-bridge-acreage-lot-8](https://nationalland.com/listing/old-brady-road-steele-bridge-acreage-lot-8)



National Land Realty  
9 N. Conception St.  
Mobile, AL 36602  
[NationalLand.com](https://NationalLand.com)



**Clint Flowers**  
Office: 251-572-7366  
Cell: 251-387-0787  
[cflowers@nationalland.com](mailto:cflowers@nationalland.com)

The above information is from sources deemed reliable, however the accuracy is not guaranteed. National Land Realty assumes no liability for error, omissions or investment results.