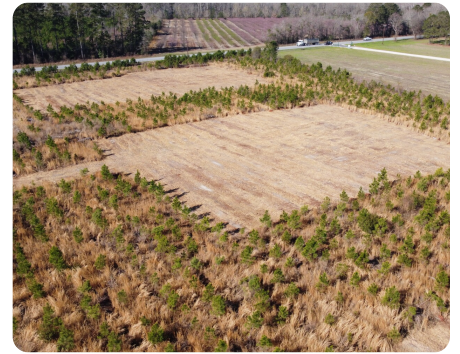




## Cross Estates – Lot 3

2.28 +/- Acres | Berkeley County, SC | \$69,900



### ADDRESS

0 Highway 6  
Cross, SC 29436

### LOCATION

From the intersection of HWY 6 and Farm Hill Circle the property is .5 Mile miles on the right. (Right across from Elias Ln)

### PROPERTY SUMMARY

This lot is in the new Cross Estates, this beautiful lot offers the perfect opportunity to build your dream home. The property features young pine trees, providing privacy. The homesite has already been cleared, making it easy to get started on your new build.

Located just a stone's throw from Lake Marion and Lake Moultrie, this lot is ideal for those who enjoy outdoor activities like fishing and boating. Plus, with its close proximity to Charleston, SC—only an hour away—this property offers the perfect blend of rural tranquility and easy access to city amenities.

The lot has already been surveyed and has a perc test for septic, making it nearly turn key to begin building.

[nationalland.com/listing/cross-estates-lot-3](https://nationalland.com/listing/cross-estates-lot-3)



National Land Realty  
669 Marina Drive  
Ste B-4  
Charleston, SC 29492  
[Nationalland.com](https://Nationalland.com)



Robert Waddell  
Office: 843-473-7958  
Cell: 843-749-0618  
Fax: 864-331-1610  
[rwaddell@nationalland.com](mailto:rwaddell@nationalland.com)

The above information is from sources deemed reliable, however the accuracy is not guaranteed.  
National Land Realty assumes no liability for error, omissions or investment results.