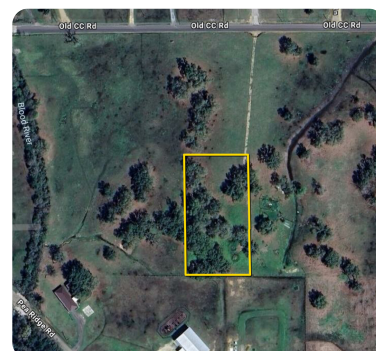
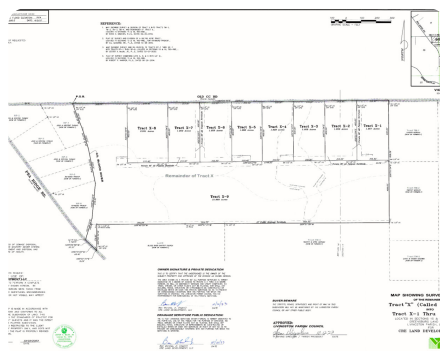
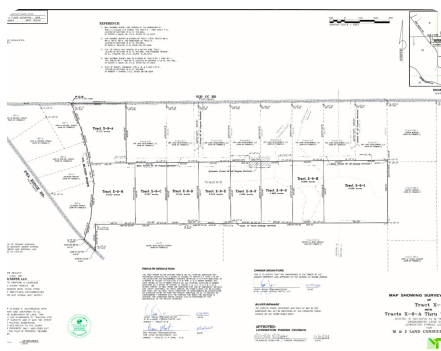


**SOLD**



## Custom Homesite Lot D

2.01 +/- Acres | Livingston Parish, LA



### ADDRESS

Old CC Rd  
Lot X-9-D  
Albany, LA 70711

### PROPERTY SUMMARY

Build your custom home on beautiful property located in Albany, La. on desired Old CC Rd. No mobile. No HOA. Utility pole is located 1 Lot over. Natural Gas, Water, and Internet available at road.

### LOCATION

From Walker, Exit I-12 at the Albany exit, go left and take Hwy 43 then turn left on Old CC Rd. Turn left on the gravel road, JJ Street, X-9-D is on the right at the corner of JJ Street.

[nationalland.com/listing/custom-homesite-lot-d](https://nationalland.com/listing/custom-homesite-lot-d)



National Land Realty  
37283 Swamp Road  
Unit 702  
Prairieville, LA 70769  
[Nationalland.com](https://Nationalland.com)



Allison Liuzzo  
Office: 225-831-8677  
Cell: 225-773-6525  
Fax: 864-331-1610  
[Aliuzzo@nationalland.com](mailto:Aliuzzo@nationalland.com)

The above information is from sources deemed reliable, however the accuracy is not guaranteed.  
National Land Realty assumes no liability for error, omissions or investment results.