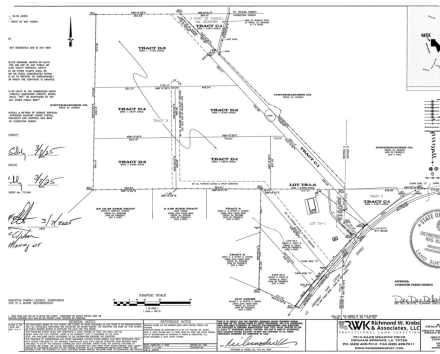


# NATIONAL LAND REALTY®

## 6.18 Acre Homesite in Walker (Lot D-2)

6.18 +/- Acres | Livingston Parish, LA | \$154,500



### ADDRESS

0 John Lanier Rd Lot B-2  
Walker, LA 70453

### LOCATION

From I-12 take Walker exit North to Hwy 190. Right onto Hwy 190; in a couple miles turn onto N Corbin Rd and go to the dead end. Turn left onto Weiss Rd and almost immediately turn right onto John Lanier Rd where you'll travel approx 3 miles and the driveway is on your left.

### PROPERTY SUMMARY

Completely cleared pastureland all in X flood zone! This 6.18 acres is on the parish line as far out in the country as you can get while still being in Walker and North Corbin school district for the kids! Plenty of room to build your family's home, dig a lake, raise some animals, plant a garden, watch the kids ride their 4-wheelers and bikes on the pastureland or anything else you can dream up.

No mobile homes allowed.

Private road access with maximum of 5 homes on the road.

[nationalland.com/listing/618-acre-homesite-in-walker-lot-d2](https://nationalland.com/listing/618-acre-homesite-in-walker-lot-d2)



National Land Realty  
37283 Swamp Road  
Unit 702  
Prairieville, LA 70769  
[NationalLand.com](https://NationalLand.com)



Brandon Wilkins  
Office: 225-401-3499  
Cell: 225-362-1042  
Fax: 864-331-1610  
[Bwilkins@nationalland.com](mailto:Bwilkins@nationalland.com)

The above information is from sources deemed reliable, however the accuracy is not guaranteed.  
National Land Realty assumes no liability for error, omissions or investment results.