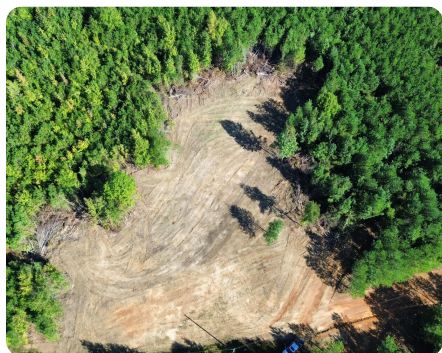


SOLD



Reid Road Homestead

38 +/- Acres | Marion County, AL



ADDRESS

01 Reid Road
Shottsville, AL 35593

LOCATION

Call for directions.

PROPERTY SUMMARY

This tract is made up of 38 +/- acres of 10-year-old planted loblolly on gently sloped ground with over half a mile of frontage on 2 county roads. There is one cleared food plot that would also make an excellent home or campsite with power available. An additional 162 acres north of Reid Road can also be purchased if you are looking for more acreage. Call today to see this home site and hunting property!

nationalland.com/listing/reid-road-homestead



National Land Realty
2633 Valleydale Rd.
Suite 150
Birmingham, AL 35244
Nationalland.com



John Ross Havard
Office: 205-606-5493
Cell: 205-300-5007
Fax: 864-331-1610
Jrhavard@nationalland.com

The above information is from sources deemed reliable, however the accuracy is not guaranteed.
National Land Realty assumes no liability for error, omissions or investment results.