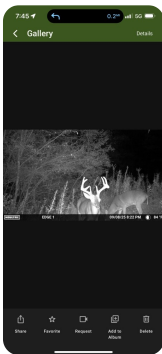




Recreation and Timber Property With Multiple Water Sources

409.27 +/- Acres | Blount County, AL | \$1,307,000



ADDRESS

0 Souls Chapel Rd
Blountsville, AL 35031

LOCATION

Coming from Oneonta, go north on Hwy. 75 for 7 miles and take a left on Hwy 26. From there go two miles and take a right on Souls Chapel Road, stay on Souls Chapel Road for 2 miles, and the property will be located on your left.

PROPERTY SUMMARY

Ideal for avid outdoorsmen, this property offers exceptional wildlife diversity and excellent recreational and timber investment opportunities. Multiple scenic building sites provide extraordinary views, with easy paved-road access and utilities (water, power, fiber internet). Over 6 miles of well-maintained trails allow effortless exploration, hunting, or riding. Several ponds and year-round springs ensure continuous water availability. Numerous food plots support thriving deer, turkey, ducks, and other wildlife year-round. Timber consists of both planted and natural pine stands of varying ages, complemented by hardwood ridges and bottoms with mixed-age timber. Don't miss this opportunity—shown by appointment only, just in time for turkey season!

nationalland.com/listing/the-bluff-recreational-and-timber-property



National Land Realty
9 N. Conception St.
Mobile, AL 36602
NationalLand.com



Travis Cleveland
Office: 251-727-5599
Cell: 205-359-1528
Fax: 888-672-1810
Tcleveland@nationalland.com

The above information is from sources deemed reliable, however the accuracy is not guaranteed.
National Land Realty assumes no liability for error, omissions or investment results.