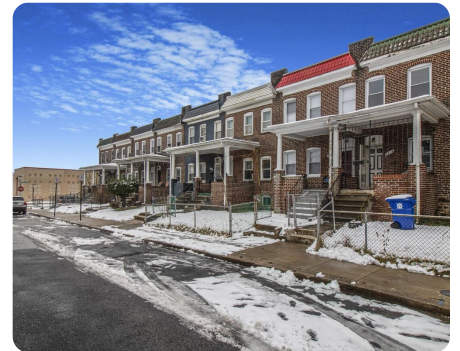
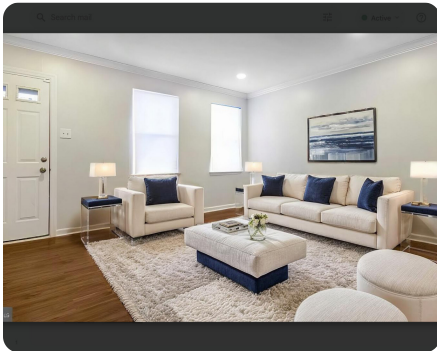


UNDER CONTRACT



## 2613 Laurretta Ave, Baltimore, MD 21223

0.01 +/- Acres | Baltimore City County, MD | \$140,000



### ADDRESS

2613 Laurretta Ave  
Baltimore, MD 21223

### LOCATION

Use GPS

### PROPERTY SUMMARY

This recently renovated interior townhome boasts beautiful laminate wood flooring throughout the living areas and bedrooms, while the bathroom features updated ceramic tile. The modern kitchen is equipped with granite countertops and a stylish subway tile backsplash. Designed with an open-concept layout, the living and dining areas seamlessly connect to the kitchen, creating a welcoming and functional space. The home also offers central air and heating for year-round comfort and is conveniently located near downtown Baltimore. This is the perfect home to start your homeownership journey!

[nationalland.com/listing/2613-laurretta-ave-baltimore-md-21223](https://nationalland.com/listing/2613-laurretta-ave-baltimore-md-21223)



National Land Realty  
5614 Connecticut Ave NW  
#352  
Washington, DC 20015  
[NationalLand.com](https://NationalLand.com)



Judy Allen  
Office: 410-632-6986  
Cell: 410-855-1384  
Fax: 864-331-1610  
[Judyallen@NationalLand.com](mailto:Judyallen@NationalLand.com)

The above information is from sources deemed reliable, however the accuracy is not guaranteed.  
National Land Realty assumes no liability for error, omissions or investment results.