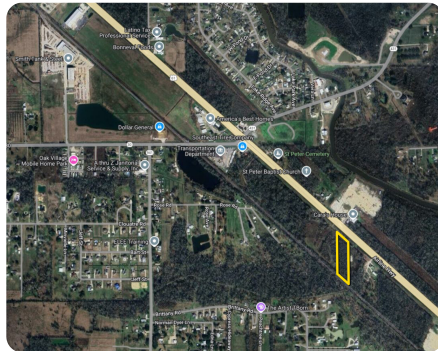




## MU with Frontage on Airline Hwy

3.1 +/- Acres | Ascension Parish, LA | \$269,000



### ADDRESS

9895 Airline Hwy  
Gonzales, LA 70737

### LOCATION

Exit I10 at Sorrento, Hwy 22. Head towards Airline Hwy and make a left on Airline Hwy. property 1-2 miles down on the left. Sign on property.

### PROPERTY SUMMARY

Zoned Mix Use. Multiple possibilities; warehouse, automotive, office, and light industrial. Approx. 260' road frontage on Airline Hwy. Survey available. Sign on property.

[nationalland.com/listing/mu-with-frontage-on-airline-hwy](https://nationalland.com/listing/mu-with-frontage-on-airline-hwy)



National Land Realty  
231 E. 6th Avenue  
PO Box 1539  
Oakdale, LA 71463  
[NationalLand.com](https://NationalLand.com)



Allison Liuzzo  
Office: 225-831-8677  
Cell: 225-773-6525  
Fax: 864-331-1610  
[Aliuzzo@nationalland.com](mailto:Aliuzzo@nationalland.com)

The above information is from sources deemed reliable, however the accuracy is not guaranteed.  
National Land Realty assumes no liability for error, omissions or investment results.