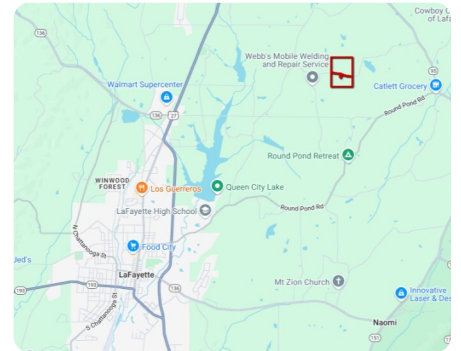


NEW

NATIONAL LAND REALTY®

LaFayette Recreational & Timber Tract

117 +/- Acres | Walker County, GA | \$650,000



ADDRESS

Cordell Road
Lafayette, GA 30728

LOCATION

5 +/- miles from LaFayette, GA

PROPERTY SUMMARY

Located just 10 minutes from Lafayette, GA, and within a 30-minute drive to both Dalton, GA, and Chattanooga, TN, this exceptional 117 +/- acre property offers the perfect blend of natural beauty and convenience. The land features a diverse mix of mature volunteer pines and stunning hardwood timber, creating an ideal habitat for wildlife. The property has roughly 2,000 feet of paved frontage on Cordell Road which divides the property. There are approximately 67 acres on the north side and 50 acres on the south side, making it easily subdividable for future investment or multiple uses.

This tract is a haven for outdoor enthusiasts, with an abundance of deer and turkey sign, ensuring an excellent hunting experience. A creek runs west to east across the south side of the property, as well as a small pond. There are a couple of beautiful food plots as well. This is a great opportunity to own an excellent rec tract with versatile potential.

nationalland.com/listing/lafayette-recreational-timber-tract



National Land Realty
7001 Pelham Road
Suite M
Greenville, SC 29615
NationalLand.com

Edward Weathers
Office: 855-384-5263
Cell: 803-928-6188
Fax: 864-331-1610
Eweathers@nationalland.com

Bradley Shurett
Office: 423-564-1919
Cell: 256-599-8153
Fax: 864-331-1610
Brad.Shurett@nationalland.com

The above information is from sources deemed reliable, however the accuracy is not guaranteed.
National Land Realty assumes no liability for error, omissions or investment results.