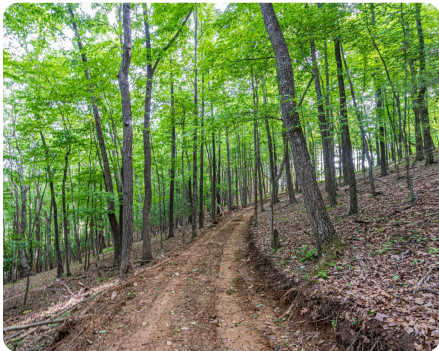




Laurel Springs Homesite and Farm Acreage

30 +/- Acres | Alleghany County, NC | \$325,000



ADDRESS

0 Irwin Grocery Rd
Laurel Springs, NC 28644

LOCATION

Contact listing agent for viewing

PROPERTY SUMMARY

30 +/- acres located in Laurel Springs, NC. Less than 20 minutes from Sparta and 1 hour from Boone. Well-manicured roads traverse through the property taking you to various locations. Scenic views come in abundance. Multiple sites available for vacation or a forever home. Abundant wildlife exists making it prime hunting for Bear, Turkey, Whitetail, and small game. Positioned approximately 10 min from NC Wildlife stocked trout streams like Cranberry Creek. Investment opportunities round out the space for scenic home-building, hunting, shooting, and other outdoor activities. Small Creek located in this tract. Road frontage on Irwin Grocery Rd.

nationalland.com/listing/laurel-springs-homesite-and-farm-acreage



National Land Realty
3265 S NC 127 Hwy
Hickory, NC 28602
NationalLand.com



Darren Sweet
Office: 828-677-2579
Cell: 828-234-8875
Fax: 864-331-1610
dsweet@nationalland.com

The above information is from sources deemed reliable, however the accuracy is not guaranteed. National Land Realty assumes no liability for error, omissions or investment results.