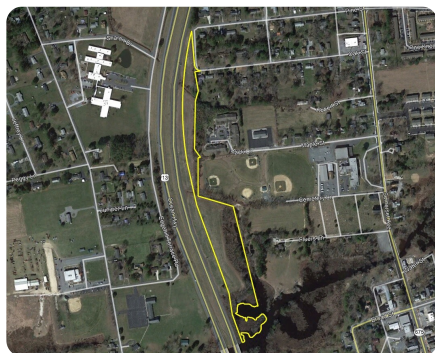


SOLD



Ocean Highway Commercial

8.76 +/- Acres | Somerset County, MD



ADDRESS

0 Ocean Highway
Princess Anne, MD 21853

LOCATION

Located along the east side of Ocean Highway between Deal Island Rd and Mr Vernon Rd

PROPERTY SUMMARY

8.76+- acre unimproved tract located with over 2,600+- feet of frontage along the northbound lane of RT 13. Currently zoned R-2 – Medium Density Residential in Somerset County and adjoining the municipal boundary of the Town of Princess Anne. Town services (water & sewer) located just to the east of property. Southern end of property has frontage along the Manokin River.

nationalland.com/listing/ocean-highway-commercial



National Land Realty
9072 Canter Lane
Hebron, MD 21830
NationalLand.com



Doug Williams
Office: 443-412-8971
Cell: 410-726-1831
Fax: 864-331-1610
Dwilliams@nationalland.com

The above information is from sources deemed reliable, however the accuracy is not guaranteed.
National Land Realty assumes no liability for error, omissions or investment results.