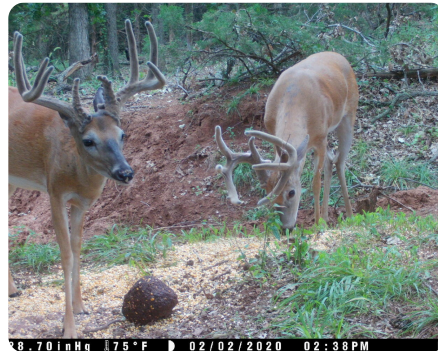




Big Deer Near the River

160 +/- Acres | Washita County, OK | \$544,000



ADDRESS

0 N 2350 Rd
Mountain View, OK 73062

LOCATION

Call for Directions

PROPERTY SUMMARY

Located just one parcel away from the Washita River, this property boasts a substantial deer herd with multiple deer over 160 harvested by the current owners. The unique topography, characterized by elevation changes and deep canyons, not only attracts game but also holds them in plenty of cover. The surrounding planted fields additionally ensure a consistent food source for your deer herd. Its spring-fed creek that meanders through the property, provides a vital water source, while the creek bottoms are adorned with large, mature oak trees and cedars, creating additional cover and hunting opportunities for Giant Whitetail. Complete with established food plot, corrals and a shop building, This property is well prepared if you want to build a home. The homesite offers spectacular 360-degree views of the surrounding countryside and electricity is on the North boundary. Additional Land Available

nationalland.com/listing/big-deer-near-the-river



National Land Realty
5815 W US Hwy 270
McAlester, OK 74501
NationalLand.com

Clay Baxter
Office: 918-626-1696
Cell: 918-424-3710
Fax: 864-331-1610
Cbaxter@nationalland.com

Chris Eakens
Office: 918-719-1931
Cell: 918-429-9996
Fax: 864-331-1610
Ceakens@nationalland.com

The above information is from sources deemed reliable, however the accuracy is not guaranteed. National Land Realty assumes no liability for error, omissions or investment results.