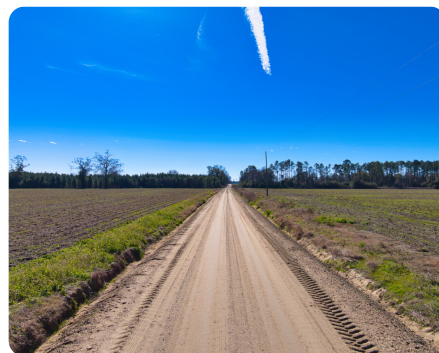


SOLD



Countyline Lot 2 Acreage

50 +/- Acres | Crisp County, GA



ADDRESS

00 Evergreen Church Road
Tract B
Cordele, GA 31015

LOCATION

Call Agent (706)302-8198

PROPERTY SUMMARY

17+/- acres. This well-maintained property is located on a quiet dirt road with good cell service. The land is mostly cleared, with some wooded areas along the left and back sides. The soil is fertile and well-suited for agriculture, being level and dry. It's ideal for continuing agricultural use or for building a home. Power lines run nearby, and the property is close to Cordele, the nearest town, offering easy access to local amenities. There are no negatives associated with the property. Contact Travis Chaffin (706)302-8198.

nationalland.com/listing/countyline-lot-2-acreage



National Land Realty
1260 Mountville-Hogansville Road
Hogansville, GA 30230
NationalLand.com



Travis Chaffin
Office: 706-707-5932
Cell: 706-302-8198
Fax: 864-331-1610
Tchaffin@NationalLand.com

The above information is from sources deemed reliable, however the accuracy is not guaranteed.
National Land Realty assumes no liability for error, omissions or investment results.