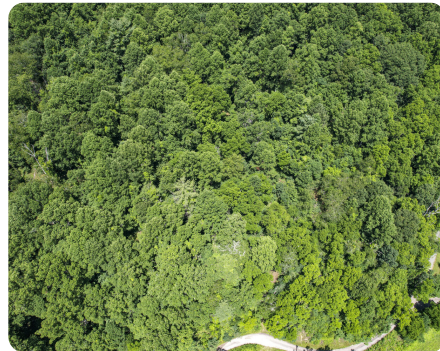


UNDER CONTRACT



## Davis Cove Getaway

10 +/- Acres | Buncombe County, NC | \$123,999



### ADDRESS

9999 Davis Cove Road  
Leicester, NC 28748

### LOCATION

From New Leicester Hwy, Turn Left  
onto Davis Cove Road. Property will  
be on your right in less than 1/4  
mile.

### PROPERTY SUMMARY

This lot is primed and ready for the right buyer to put their dream home. A 10-acre parcel in Leicester that is less than 15 minutes from the Asheville city limits, this property features easy access to Davis Cove Road, multiple possible build sites, a stream flowing through the property, and a marked trail for easy navigation. High-speed Internet/Power is available along the roadway, in addition to good cell service. Buyer to survey +/- 10-acre portion of larger parcel, approximately represented in attached Land ID Map. Seller to offer \$4000 buyer credit to offset survey costs. Call today to learn more!

[nationalland.com/listing/davis-cove-getaway](https://nationalland.com/listing/davis-cove-getaway)



National Land Realty  
13 Lynnette Dr  
Fairview, NC 28730  
[NationalLand.com](https://NationalLand.com)



**Richard Simpson**  
Office: 828-888-9210  
Cell: 828-845-4858  
Fax: 864-331-1610  
[Rsimpson@nationalland.com](mailto:Rsimpson@nationalland.com)

The above information is from sources deemed reliable, however the accuracy is not guaranteed.  
National Land Realty assumes no liability for error, omissions or investment results.