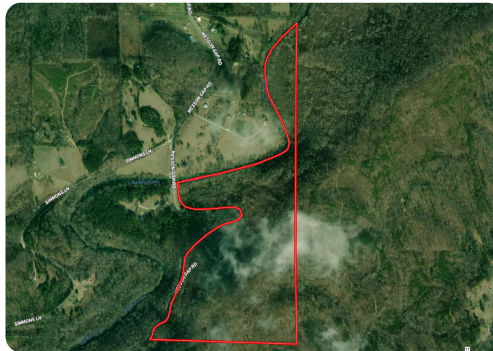


SOLD



Timber Tract Near Attala

107.32 +/- Acres | Etowah County, AL



ADDRESS

0 Wesson Gap Rd
Attalla, AL 35954

PROPERTY SUMMARY

All timber property. Great hunting opportunities with a nice creek following the east side of the property.

LOCATION

Contact agent for directions

nationalland.com/listing/timber-tract-near-attala



National Land Realty
9 N. Conception St.
Mobile, AL 36602
NationalLand.com



Travis Cleveland
Office: 251-727-5599
Cell: 205-359-1528
Fax: 888-672-1810
Tcleveland@nationalland.com

The above information is from sources deemed reliable, however the accuracy is not guaranteed.
National Land Realty assumes no liability for error, omissions or investment results.