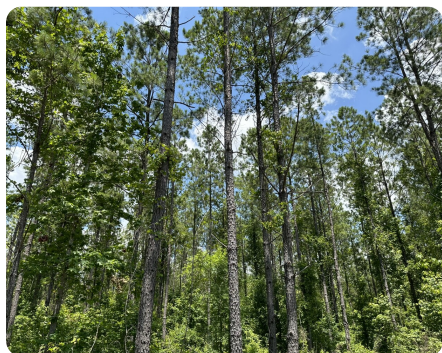


SOLD



Commissioner Creek Timber and Hunting Tract

260 +/- Acres | Jones County, GA



ADDRESS

0 Hwy 22
Gray, GA 31032

LOCATION

From Macon, GA (intersection I-16/Hwy 129) Go on Hwy 129 for 16.8 miles, including the bypass around Gray, to Hwy 22, then turn left and go 4.0 miles to Property gate on right.

From Milledgeville, GA (intersection Hwy 22/ Hwy 441) go on west on

PROPERTY SUMMARY

Just 20 minutes from Macon and 14 minutes from Milledgeville, this multi-use property has high quality Loblolly Pine, hardwoods and local highway road frontage for great access. Good food plot locations with internal road system, makes this a timberland investment or hunting tract with sustained timber income. The genetically improved Loblolly Pine is ready for 2nd thinning. There are almost 82 acres of older mixed hardwoods that protect the small streams and provide needed hard mast for deer and other wildlife species. The internal roads are in good condition which provides access throughout the property. A conservation easement is in place to protect the natural resources but will allow active timber management and even a single-family-type dwelling. There are utilities available and paved road frontage on Hwy 22. Please call Mark Anderson at (601) 596-2207 for more information.

[Read Less](#)

nationalland.com/listing/commissioner-creek-timber-and-hunting-tract



National Land Realty
11 Willow Bend Drive
Hattiesburg, MS 39402
NationalLand.com



Mark Anderson
Office: 601-891-5494
Cell: 601-596-2207
manderson@nationalland.com

The above information is from sources deemed reliable, however the accuracy is not guaranteed.
National Land Realty assumes no liability for error, omissions or investment results.